



Universal Compact Manual CMM from Helmel of course!

Utterly Handy, Rugged and Accurate Manual CMM with
Travel Range of 16" x 20" x 14" (400mm x 500mm x 350mm)

INCLUDES:

Helmel's Powerful Geomet Junior Software & PC System

Locks and Fine Adjustment in All Axes

All Mechanical Bearings - no compressed air needed

Certified Calibration Sphere and Training Widget

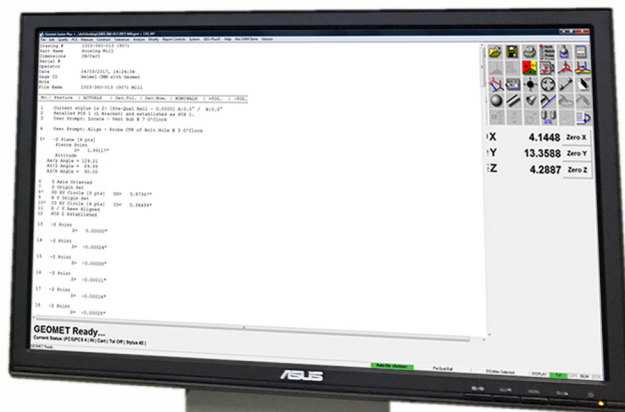
Full Year Warranty and Software Support

CHECKMASTER

216-142

See probe options

HELMEL



made in usa
by America's CMM Builder

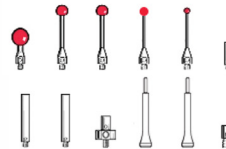




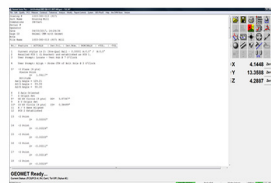
BASIC CHECKMASTER INCLUDES:



- Granite Base with Clamping Inserts
- Steel Stand, PC Compartment, Keyboard Drawer, Side Shelf for Monitor/Mouse, and Leveling Feet with Isolation
- Steel Moving Bridge Construction • Spring Reel Counterbalance
- Precision Bearings and Hardened and Ground Ways
- Non-contact Optical Steel Tape Scales and Reading Heads
- Locks and Precision Adjustment on X, Y and Z axes
- Windows 10 PC with 19" Monitor, Keyboard and Mouse
- Geomet Keystroke Magic™ Keylabels • Helmel Procounter 3-axis Interface



The Standard M2 Stylus Kit includes 2, 3, 4 and 6 mm Styli, Extensions, a 5-Way Center and Tools.



Hemel's GEOMET Junior Software is installed and tested with the included computer system. This is a proven, powerful yet easy version of Geomet 3D CMM software with auto-self-teach programming and reverse engineering tools. See User Guide at iGeomet.com. Startup (60) days Software Service included.

MODEL	TRAVELS			OVERALL		
	X	Y	Z	W	L	H
216-142	16"	20"	14"	29"	35"	45"
(mm)	400	500	350	740	890	1145

SPECIFICATIONS

Resolution: 0.000020" (0.5µm)
 Repeatability: 0.00013" (3.3µm)
 Linear Accuracy: 0.00013"+0.000005"/in.
 (3.3+L/200)µm, L=mm
 Performance per ASME B89.4.1a-1998
 Utility: 12-230V~, 50-60Hz, 15A
 grounded main power supply

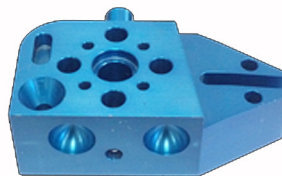
Hemel CMMs have all mechanical bearing motion. There are no air bearings, making a compressed air supply unnecessary. Our CMMs are constructed with Intrinsic Mechanical Accuracy - IMA: They are physically straight, flat, square and parallel with precision derived from the structure.

TYPICAL OPTIONS

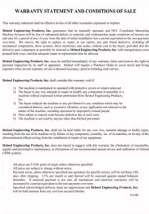
- Advanced Geomet 101 Plus level Software with expanded Features and Graphics
- Economical TP-ES Fixed Vertical Probe
- Renishaw MH20i Manually Indexing 2-Axis Probe for 0-90° Elevation and ±180° Rotation for 168 repeatable positions plus interchangeable Stylus Modules
- Extended Stylus Kit
- Video Probe with Ringlight and Cross Hair
- Clamp Kits with (2) each of 4" or 8" tall posts with clamping arms
- InkJet type Printer with Printer Shelf at side of Stand
- Installation and Calibration Check of the Checkmaster at your facility



Ø1.0000" Sphere with base for Probe Calibration and traceable Size Documentation.



The Helmel WIDGET Training Part is a tool linked to the User Guide examples. A part Print and CAD file are available.



The Helmel Warranty provides a full (1) Year of protection and includes all system components

NOTE: Training at Helmel is optional. The User Guide is FREE on line. Contact Sales@Hemel.com - or call 1-800-BEST-CMM for details.

